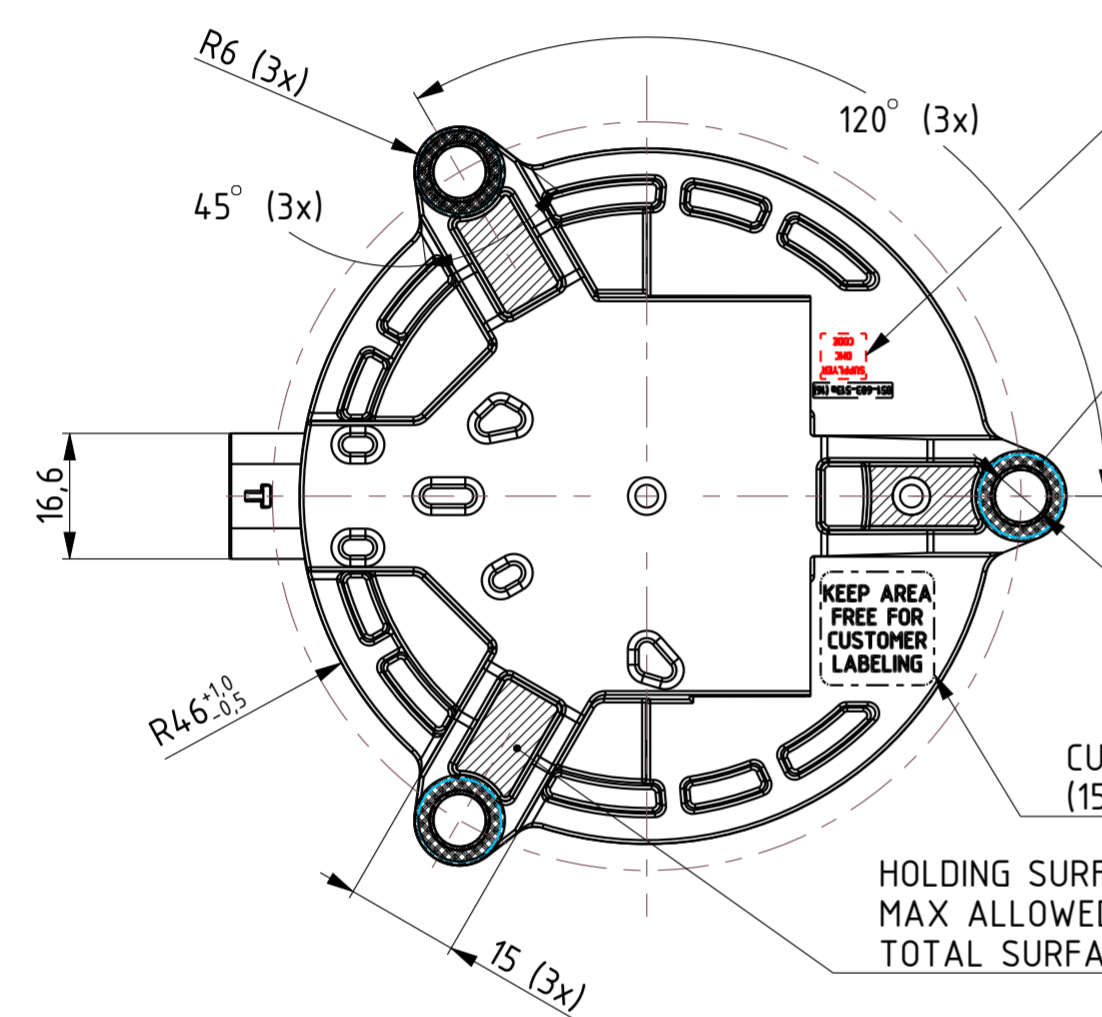
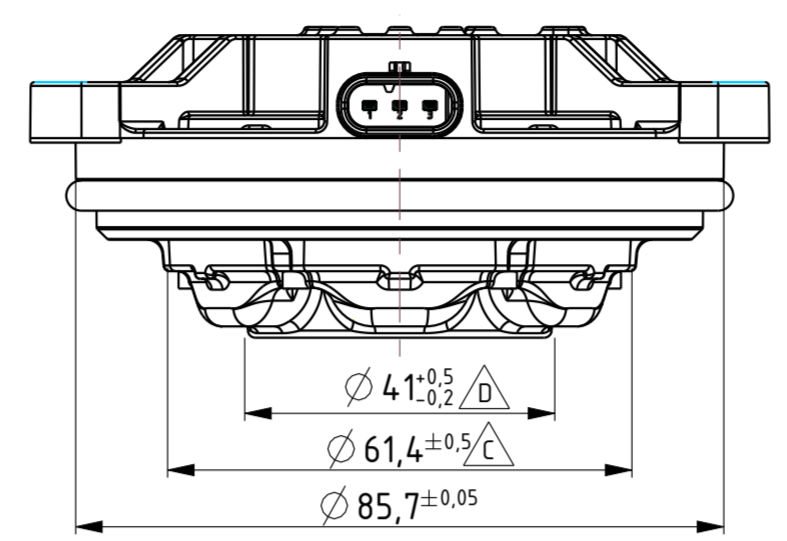
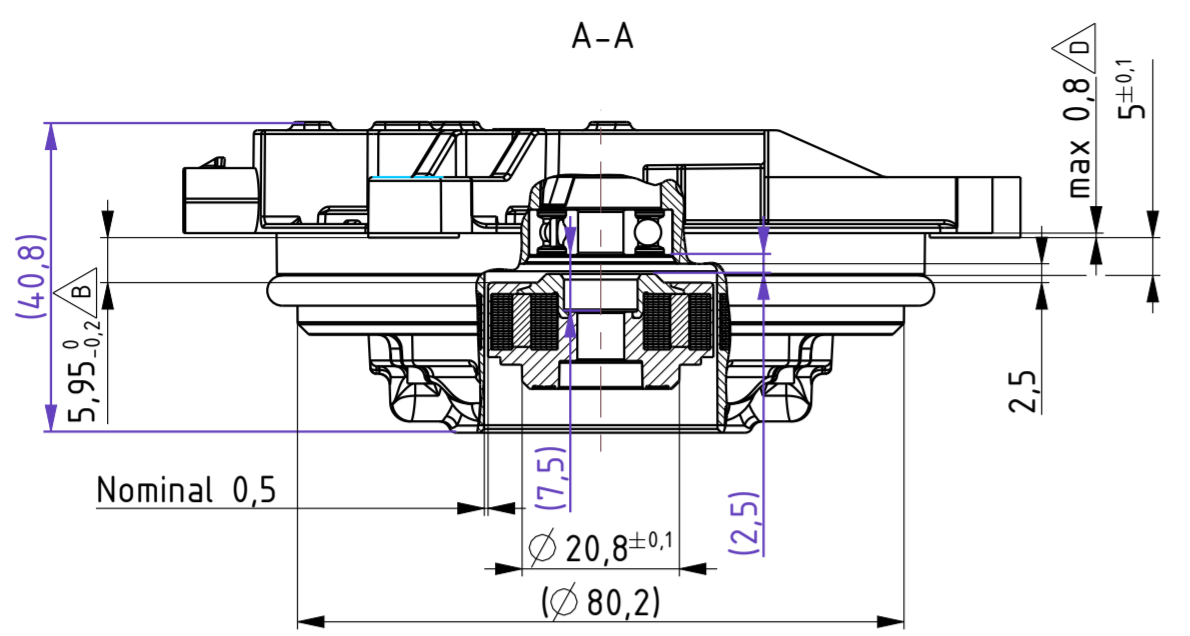
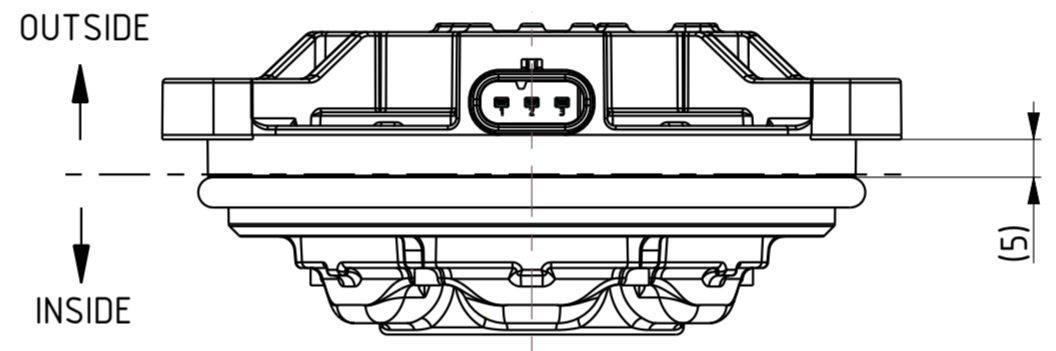


GOSIBA JE EKSKLUZIVNA LAST KOLEKTOR GRUPE. VSE PRAVICE SO OHRANJENE. NI JE DOLŽNO BODI REPRODUKCIJE NEŠTEVNO V POSREDOVANJE TRETJI OSEBI.



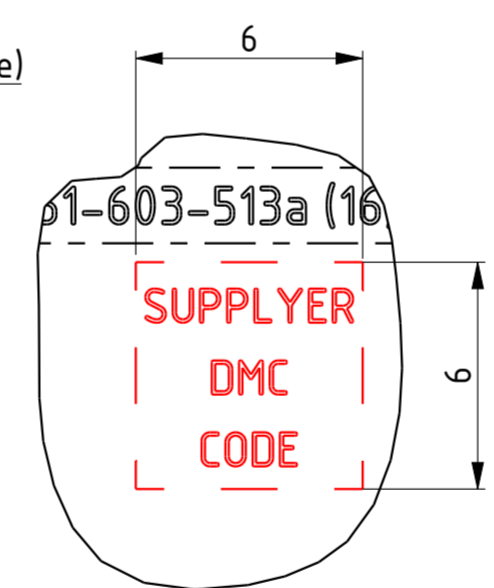
COMPONENT LABELING - DMC
 THE CONTENT OF THE DMC MUST BE ALPHANUMERIC
 SPECIAL CHARACTERS/LINEBREAKES ARE NOT ALLOWED

PRESS-IN SURFACE (3X)
 MAX ALLOWED FORCE 1400N (~467N per surface)
 TOTAL SURFACE AREA ~135mm² (~45mm² per surface)
 (FOR ASSEMBLY STATOR - SEPARATOR)
 ACC. TO TEST METHOD TBD

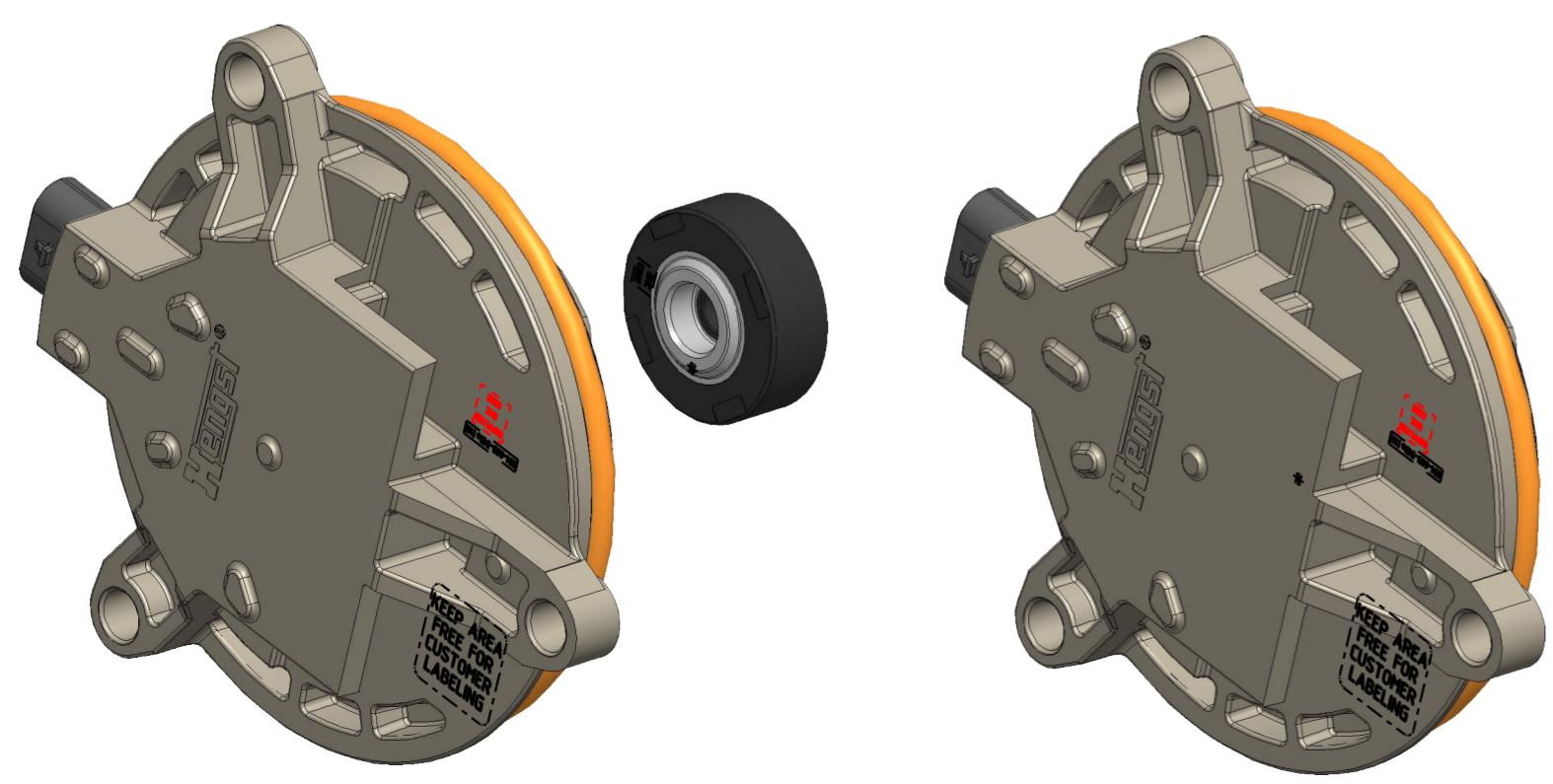


CUSTOMER LABELING STICKER (DMC)
 (15x15mm)

HOLDING SURFACE (3X)
 MAX ALLOWED FORCE 700N (~233N per surface)
 TOTAL SURFACE AREA ~300mm² (~100mm² per surface)



COMPONENT LABELING - DMC
 5:1



PRODUCT SPECIFICATION:

1. FUNCTIONAL CHARACTERISTIC		
Torque and technical efficiency	100% TEST	Ⓢ
LIN level	100% TEST	Ⓢ
TIGHTNESS		SPC
Test pressure	0,5 bar	Ⓢ
Permissible leakage rate	4 Norm cm ³ / min	
BRAKE BEHAVIOR	2000 1/min per second	SPC Ⓢ
BEARING FRICTION	TBD	SPC Ⓢ

Ⓢ SPC, SPECIAL CHARACTERISTIC (Cm/Cmk or Pp/Ppk >= 1,67 AND Cp/Cpk >= 1,33) OR 100% INSPECTION, IN CONTROL PLAN
 Ⓝ IMPORTANT CHARACTERISTIC, SAMPLING INSPECTION, IN CONTROL PLAN

2. MAX MOMENT OF INERTIA FOR SEPARATOR WITHOUT ROTOR
 min. 25 000 gmm² / max. 83 000 gmm²

3. ELECTRIC:
 - Nominal voltage: 12V

Pin No.	CONNECTOR FUNCTION
1	Us
2	LIN
3	GND

4. CLEANLINESS REQUIREMENTS
 - INSIDE

Test and cleaning process according to ISO 16232-5
 particle size for hard particles (for inner face = 198 cm²):

SIZE CLASSIFICATION	PARTICLE SIZE [µm]	MAX QUANTITY PARTICLES
I	400 < X < 600	13
H	200 < X < 400	99
G	150 < X < 200	198
F	100 < X < 150	790
E	50 < X < 100	6323

- OUTSIDE

- Examinations and purification procedures in accordance to ISO 16232-5
- Pollution < 3mg/1000cm² on component surface
- Max. expanse for hard particles 0,6mm²
- Max. size for hard particles 1000µm
- Max. 1 hard particle (on 5 parts) with a size 1500µm
- Max. length of fibers 5000µm

Hard particles: In general glossy, e.g. glass, metals, oxides; plastic is no hard particle.

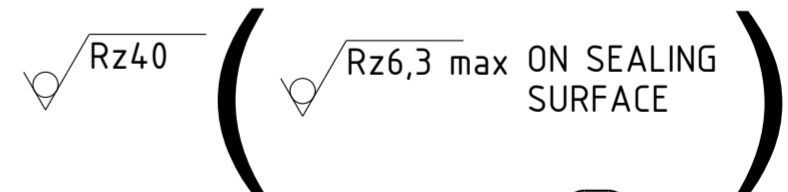
5. CONNECTOR CONTACT:

- Silver plated surface with anti-tarnish lubrication
- Ag II: (for limit temperature >=150 degree or PG17 "schaerfegrad 3 and 4" acc. to LV214):
 3 - 6µm Ag over 1 - 3µm Ni
- The adhesion of the plating must be verified through a long-term aging in dry heat of 1000h at limit temperature

6. VERSION:

SOFTWARE NR.	HARDWARE NR.
13-1638-XX-3000-01000	HW 13-1638-2000-07

Ⓝ FURTHER REQUIREMENTS ACC. TO SPECIFICATION D308858b



Measurement in accordance ISO 14405 Ⓞ

POS.	TITLE	CODE	PART NO.	MASS
1	ROTOR	13-1638-08	845681	~35g (±5g)
2	STATOR	13-1638-12	902710	~295g (±10g)

Pos.	Qty	Un.	Name and dimensions	Code/standard	Part No.	Rev.	Material W.Nr.	Note
1	1		ROTOR	13-1638-08	845681	E		
2	1		STATOR	13-1638-12	902710	A		

Surface	General Tolerances	Customer	Customer drawing
Date	ISO 2768-mK	Name	DRIVE
Drawn by	Creo	Mass (g)	
Approved		Scale	1:1
D HENG-13553 23.10.2018 Jeram B.		Format	A2
C HENG-13361 3.10.2018 Jeram B.		Part No.	0
B HENG-10980 23.5.2018 Jeram B.		Rev.	A
Rev.	ECN	Date	Name

